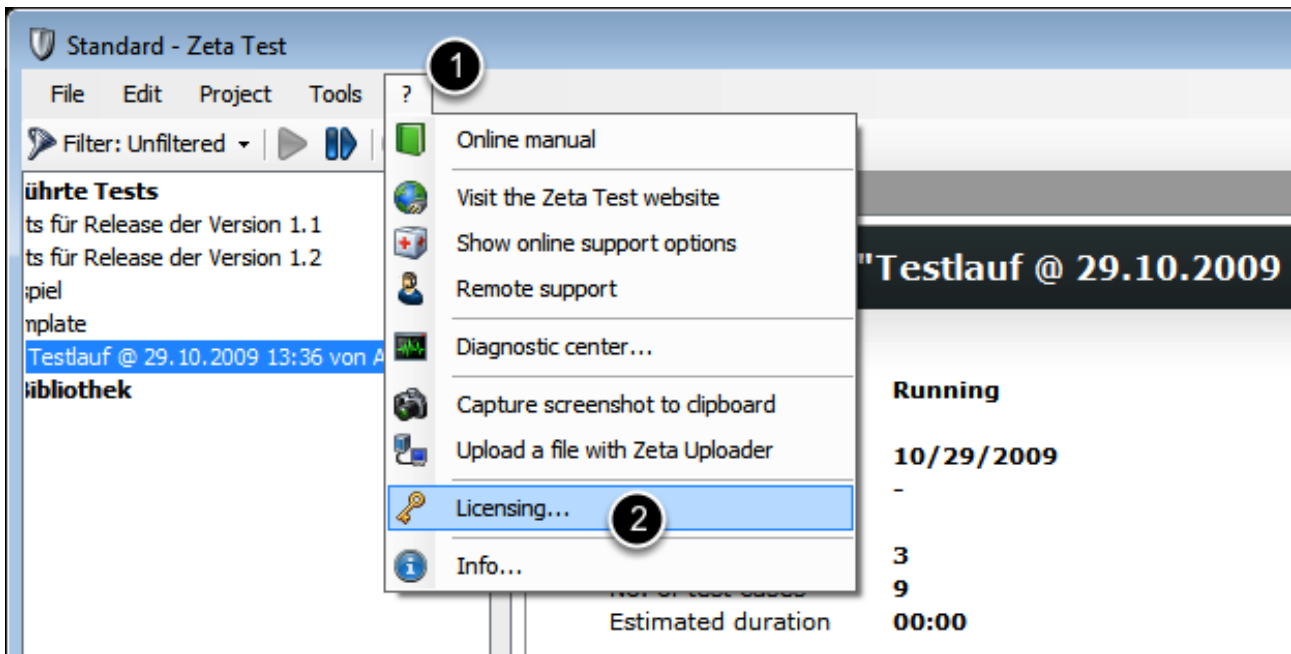


Licensing of Zeta Test

Follow these steps to license Zeta Test.

Step 1: Open Licensing-Window



In the main window select the command "? | Licensing...".

Step 2: Enter License-No.

Licensing

Enter your license number
In order to use Zeta Test, you must enter your license number

Buy license number

Please buy your license number by simply clicking the following button.

Buy license number now
(Connects to the online shop at www.zeta-test.com)

Licensing

Your PC ID:

License no.:

Version: **None**

[Support options](#) ▼

OK Cancel

Now enter your license-no. you've received from zeta software in the field "License-no.". Please be sure to enter it exactly as stated by zeta software (upper/lower case matters).

Step 3: Finish Licensing

Enter your license number
In order to use Zeta Test, you must enter your license number

Buy license number
Please buy your license number by simply clicking the following button.
Buy license number now
(Connects to the online shop at www.zeta-test.com)

Licensing
Your PC ID:
License no.:
Version: **Standard, 2 licenses**

[Support options](#) ▼

If you've entered the license-no correctly, the name of your license will be shown and you can close this window with the OK-button.